

Amenities & Property Details

AMENITIES

📺 Direct TV Premiere Package

📺 Smart Televisions

🌐 High Speed Internet

🏡 Large Fenced Yard

🏠 Dedicated Office Space

🔥 Gas Grill

🔥 Outdoor Fire Pit

🛋️ Top Grain Leather Sofa

🎨 Beautiful and Unique Artwork

🖼️ Antique Vintage Rugs

PROPERTY DETAILS

Pine Side Retreat

Located right on the wooded outskirts of Bailey's Harbor, our two bedroom two bathroom home is perfect for those who want the peace and quiet offered by the acres of forests without having to sacrifice all the spectacular wineries, restaurants, beaches, trails and beloved tourist spots our area has to offer. We have two master bedroom suites with king sized beds in each room. There is a separate entry for the second bedroom from the front porch. Relax in the sunroom enjoying epic sunsets!! The perfect escape for everyone. The exceptional location is less than 10 minutes from Egg Harbor on Green Bay to the west and Baileys Harbor on Lake Michigan to the east. Stones Throw Winery is just 5 minutes to the north. Smooth roads invite you to bike for hours. Kayak rentals and tours, as well as grocery stores, are just 5 minutes away. Free public beach on Lake Michigan just 5 minutes away. The crisp, untouched snow beckons cross-country skiing and snowmobiling to keep you active in the winter months. Or just relax; it's all up to you!

Dogs are allowed pending approval. We have a fenced area that is accessed by a dog door. For more info please message us here or email us @ bobs7272@gmail.com.

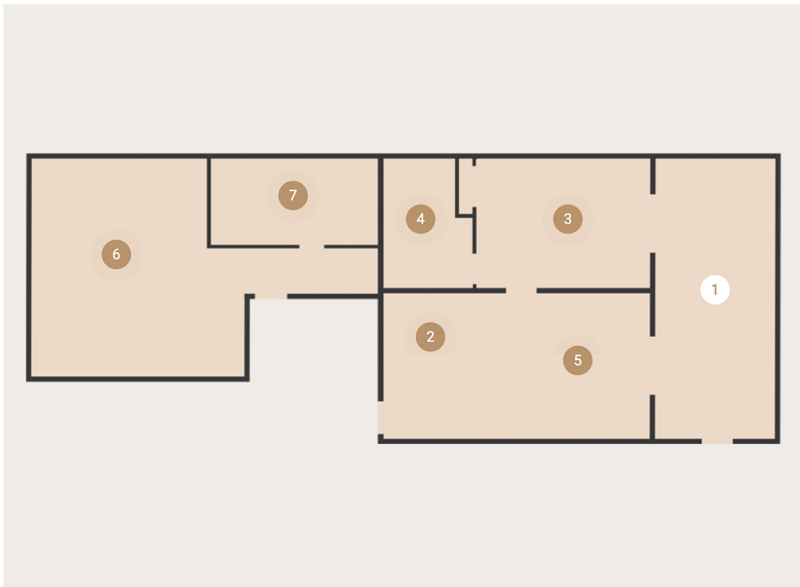
ARE YOU ON VACATION? Enjoy the outdoors in and around Door County all day, then come back to enjoy all the comfortable amenities, including fire pit, board games, smart TV, air conditioning, and a wood fire stove. There is a full kitchen for preparing meals. A dishwasher and washer and dryer make life on vacation a little easier. At home, you'll love the private setting with a fenced area in the yard.

DO YOU LOVE TO BE ACTIVE OUTDOORS? There are dozens of beaches and five of Wisconsin's expansive and beautifully maintained state parks where you can swim, hike, bike, fish, or participate in a variety of water sports and other fun outdoor activities. The roads throughout Door County are great for bicycle rides. If your stay coincides with cherry picking (mid-July) or apple picking (fall), you will be in for a treat! Golf is less than 10 minutes away either at Maxwellton Braes Golf Club or The Orchards at Egg Harbor. In the winter months the possibilities are many: Snowshoeing, cross country skiing, snowmobiling, ice fishing and fat tire biking.

ARE YOU A REMOTE WORKER? We have a dedicated office space with WiFi, desk, comfortable office chair, and the best views!

DO YOU LOVE DOGS? We do too! We are a pet friendly cottage and welcome well-behaved dogs for a small pet fee. The fenced in yard* and the nearby hiking trails ensure that your pup will get plenty of exercise and fresh air!

Floor Plan



1 LIVING & DINING SUNROOM

Open concept living and dining area in a spectacular sunroom creating more accessible interconnected spaces with natural light flow

2 KITCHEN

3 MASTER SUITE

4 MASTER BATHROOM

5 OFFICE AREA

6 GUEST SUITE

7 GUEST BATHROOM