

Amenities & Property Details

AMENITIES

📺 Direct TV Premiere Package

📺 Smart Televisions

🌐 High Speed Internet

🏡 Large Fenced Yard

🏠 Dedicated Office Space

🔥 Gas Grill

🔥 Outdoor Fire Pit

🛋️ Top Grain Leather Sofa

🎨 Beautiful and Unique Artwork

🏺 Antique Vintage Rugs

PROPERTY DETAILS

Pine Side Retreat

Located on 5 acres less than a mile from the absolute center of Door County, our dog friendly home with a fenced yard is perfect for those who want peace and quiet without having to sacrifice all the spectacular restaurants, wineries, beaches, trails and beloved tourist spots our area has to offer. We have two master bedroom suites with king sized beds and en-suite baths in each room. There is a separate entry for the second bedroom from the front porch. Relax in the sunroom enjoying epic sunsets!! The perfect escape for everyone. Our house is less than 10 minutes from both Egg Harbor on Green Bay to the west and Baileys Harbor on Lake Michigan to the east. Kayak rentals and tours, as well as grocery stores, are also less than 10 minutes away. Questions? Call us at 757-512-0222 or email bobs7272@gmail.com.

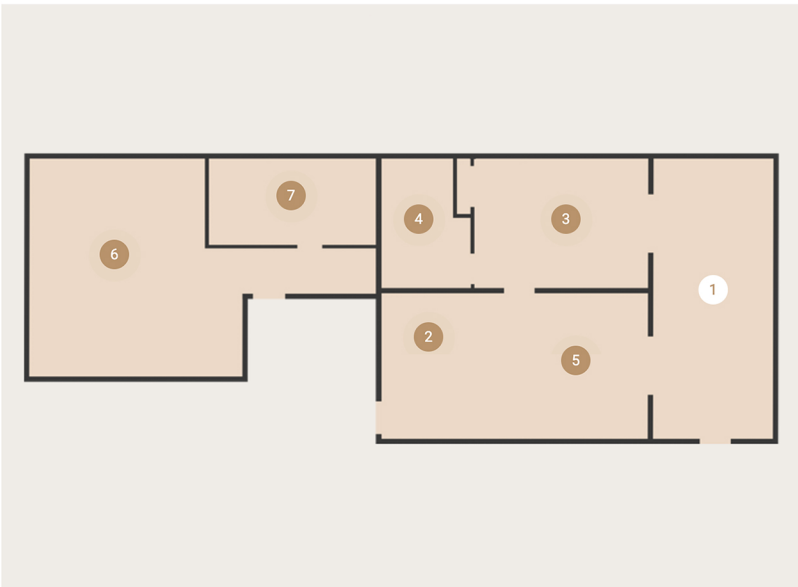
ARE YOU ON VACATION? Enjoy the outdoors in and around Door County all day, then come back to enjoy all the comfortable amenities, including fire pit, gas grill, board games, smart TVs, air conditioning, and a fully equipped kitchen for preparing meals. A dishwasher and washer and dryer make life on vacation a little easier.

DO YOU LOVE TO BE ACTIVE OUTDOORS? Door County has more miles of shoreline than any other county in America. There are dozens of beaches and five of Wisconsin's expansive and beautifully maintained state parks where you can swim, hike, bike, fish, or participate in a variety of water sports and other fun outdoor activities. The roads throughout Door County are great for bicycle rides. If your stay coincides with cherry picking (mid-July) or apple picking (fall), you will be in for a treat! Golf is less than 10 minutes away either at Maxwelton Braes in Baileys Harbor or at The Orchards in Egg Harbor. In the winter months the possibilities are many: Snowshoeing, cross country skiing, snowmobiling, ice fishing and fat tire biking.

ARE YOU A REMOTE WORKER? We have a dedicated office space with WiFi, desk, comfortable office chair, and the best views!

DO YOU LOVE DOGS? We do too! We are pet friendly and welcome two well-behaved dogs for a small pet fee. The fenced in yard and nearby hiking trails (including one that loops around our 5 acre lot) ensure that your pup will get plenty of exercise and fresh air!

Floor Plan



1 LIVING & DINING SUNROOM

Open concept living and dining area in a spectacular sunroom creating more accessible interconnected spaces with natural light flow

2 KITCHEN

3 MASTER SUITE

4 MASTER BATHROOM

5 OFFICE AREA

6 GUEST SUITE

7 GUEST BATHROOM